



Model 88S Food Grade System Print Direct to Food Products. USDA/FDA Approved and Compliant Inks.



Print real-time “Best By,” “Lot Code,” “Sell by,” “Expiration Codes” and other identifying marks and codes to any substrate.

The Model 88S Food Grade is targeted at printing direct to food products such as eggs, cookies, baked goods and many other substrates that are for human consumption. Print 1, 2, 3, 4 or 5 lines of text or graphics. USDA and FDA approved/compliant inks are available in red, blue or green color.

Systems are simplified to allow anyone to operate, minimizing operator touches, extending time between human interaction.



PRINT CAPABILITIES

LINES OF PRINT—1, 2, 3, 4 or 5 lines of text, graphics and barcodes.

IMAGE HEIGHT—from .06" (1.5 mm) to .75" (19 mm).

NON-CONTACT PRINTING—ink throw distances from .5" (12 mm) up to 2" (50 mm).

PRINT SPEEDS—up to 1500 feet/minute (470 meters/minute) for single line of print and up to 345 feet/minute (108 meters/minute) for two lines of print, up to 173 feet/minute (54 meters/minute) for three lines of print, up to 119 feet/minute (36 meters/minute) for four lines of print and up to 114 feet/minute (35 meters/minute) for five lines of print.

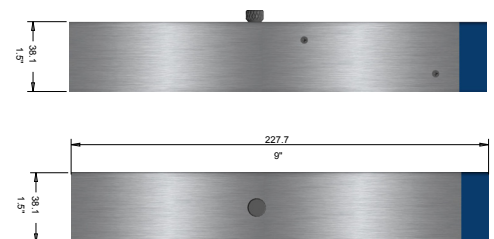
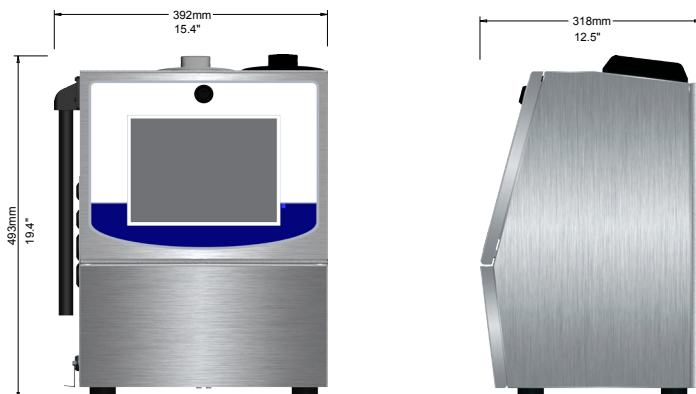
- **CleanStart™**—automatically cleans printhead eliminating daily and weekly cleanings.
- **10.4" Color Touch Screen**—always on, vivid display with large intuitive buttons and status indicators.
- **OneTouch™**—single step operator functions reduce operator steps.
- **Large Volume Ink Tanks**—extend time between fluid additions to weeks or months.
- **On-the-Fly External Ink Filling**—accomplished in less than a minute with no waste.
- **AutoOff™ Go Home Button**—automate and eliminate time consuming end of day manual routines.

THE CLOSER YOU LOOK,
THE BETTER BESTCODE LOOKS!



Model 88S Food Grade Specifications

| | |
|-------------------------|---|
| Technology | Continuous Ink Jet (CIJ) Technology, Single Printhead Control |
| User Interface | 10.4" (264 mm) Color LCD, Touch Screen, Icon based – Graphical User Interface (GUI) |
| Lines of Print | 1 - 5 Lines, 32 pixel |
| Print Fonts | 5, 7, 9, 12, 16, 19, 25, 32 |
| Adjustable Print Height | .06" (1.5 mm) - .50" (12 mm) |
| Optional Print Height | .10" (2 mm) - .75" (19 mm) |
| Print Speed | 1 Line: 1500 feet/minute (470 meters/minute), 2 Line: 345 feet/minute (108 meters/minute), 3 Line: 173 feet/minute (54 meters/minute), 4 Line: 119 feet/minute (36 meters/minute), 5 Line: 114 feet/minute (35 meters/minute) |
| Ink Throw Distance | True Non-Contact Printing, .5" (12 mm) - 2" (50 mm) |
| Electronic Hardware | 32 Bit ARM 9, 208 Mhz Processor |
| Memory Storage | 4 GByte Solid State Drive, 15 MByte Flash, 128 Mbyte RAM, USB Interface (thumb drive) |
| Machine Interface | RS232, Ethernet |
| Inputs | 1 Photocell, 1 Photocell or Programmable Input, 1 Shaft Encoder, 8 Field Programmable Inputs, Remote Message Selection option – 256 possible selections |
| Outputs | 4 Alarm Outputs, 1 Relay Output |
| Enclosure | Stainless Steel Enclosure |
| Ingress Protection | IP65 |
| SmartFilter™ Life | 2000 hours |
| Operating Environment | Temperature: 32° - 122° F (0° - 50°C), % Relative Humidity: 10 - 90% (non-condensing) |
| Electrical Requirements | Auto Ranging: 100 - 240 VAC (3 Amp), Frequency 50 - 60 Hz, Power Consumption: 50 W |
| Compliance | CE Certified, RoHS Compliant |
| Message / Code Creation | Dynamic Message Storage (over 1000 Messages), WYSIWYG Message Editing, Drag / Drop Field Based Formatting, Multi-National (Unicode) Character Printing, Download Fonts, Integrated Font Editor, Real and Expiration Time and Date, Shift and Rollover Functions, Product and Batch Counting, Remote Count Resets, Download Graphics and Integrated Graphic Editor, Continuous and Repeat Print, Auto Reverse / Traverse Print |
| Operation Features | Icon Based Operation, Single Button Start, Single Button Stop / Power Off, Password Security, Automatic Diagnostics, Error and Activity Logs, Service Reminders, Backup / Restore Functions, USB Load Firmware Updates, All Operator Languages, Download Languages |
| Ink Delivery | SmartFill™ Ink Bottle: 32 oz (946 ml), SmartFill™ Makeup Bottle: 32 oz (946 ml) |
| Fluid Capacity | Ink Capacity: 68 oz (2 liters), Makeup Capacity: 102 oz (3 liters) |
| Ink Types | Print Direct to Food Products - Food Grade USDA, FDA Approved and Compliant |
| Ink Colors | Red, Blue and Green |
| Ink Dry Time | Porous Food: Immediate, Semi-Porous Food: Immediate, Non-Porous Food: 3-7 seconds |
| Printhead Umbilical | 10 feet (3 meters), 15 feet (4.5 meters) option |
| Printhead Options | Right Angle Printhead |
| Printing | Printhead Orientation – Omnidirectional |
| Weight | 45 lbs (20 kg) |
| Optional Accessories | Alarm Beacon, Photocells, Mountings, Shaft Encoder, AirFlow™ Positive Air Kit (for high dust), Printhead Wash Station |



By request, BestCode can adapt hardware and software to meet specific application demands.

t. 817.349.8555 | f. 817.349.8480 | info@bestcode.co | www.bestcode.co

©2011-2017 BestCode. Designed and Manufactured by BestCode in Texas, USA
BestCode and Continuous Innovations are trademarks of BestCode. BestCode reserves the right to change specifications without notice.

bestCode
continuous innovations

